

▣ Abstract ▣

A Case of Central Serous Chorioretinopathy Following Systemic Corticosteroid Therapy

Myung Sook Ha, M.D., Jong Hoon Lee, M.D.

Central serous chorioretinopathy(CSC) is characterized by a serous elevation of neurosensory retina in the posterior pole of the fundus. Its etiology and pathophysiological basis are still unknown. But it is known to be related to corticosteroid therapy. We experienced a development of CSC in a patient who had taken high dose systemic corticosteroid to treat sudden hearing loss. So we report this case with a review of the literatures(J Korean Ophthalmol Soc 40:1695~1700, 1999).

Key Words : Central serous chorioretinopathy, Corticosteroid

< : 1999 1 6 , : 1999 3 29 >

Address reprint requests to Jong Hoon Lee, M.D.
Department of Ophthalmology, Dankook Hospital, The Dankook University Medical College
San #29 Anseo-dong, Cheonan, Chungnam, 330-714, Korea
Tel : 82-417-550-6377, FaX : 82-417-561-0137

80mg 5 , 60mg 1

가

2

60mg 2 10

4~8

mg

7 (520mg) 가

가

가

19

5mg

가

1-3)

17mmHg

1.0, 0.2

가

가

2.5×2 (Fig. 2),

(Fig. 3).

47 가 4

가 가

(Fig. 1)

가

(Fig. 4).

(prednisolone)

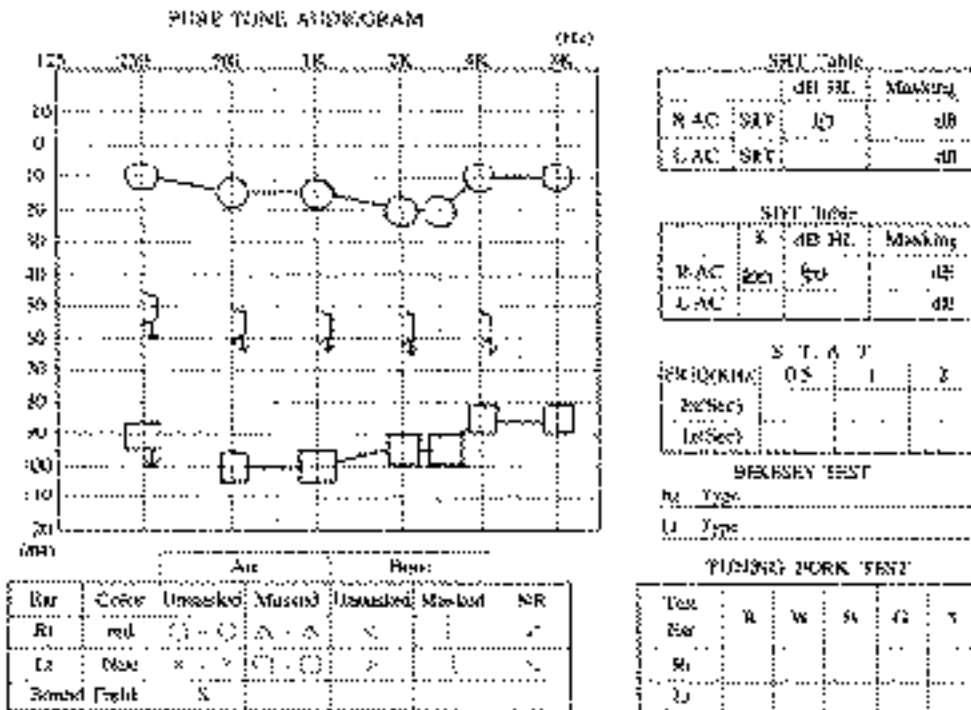


Fig. 1. Audiogram of the left ear showing a sensorineural hearing loss.

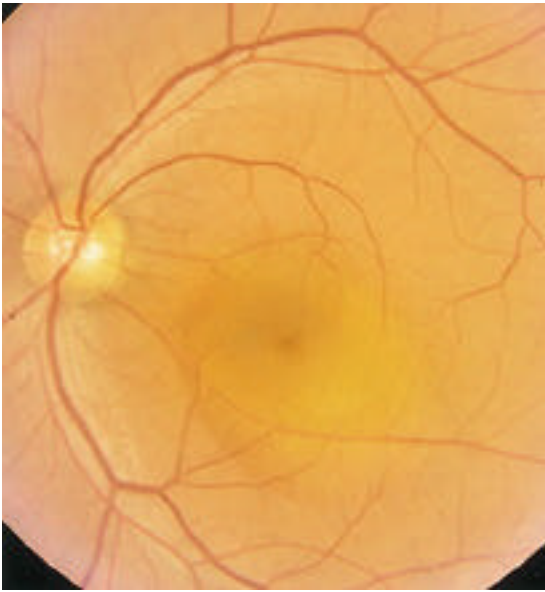


Fig. 2. Fundus photograph of the left eye showing a well-circumscribed neurosensory retinal detachment in the macula.

2 0.7
 42
 0.8
 30~40
 4), 5),
 가⁶⁾
 가
 Gass Little 3
 가
 Mazzuca Benson 7),

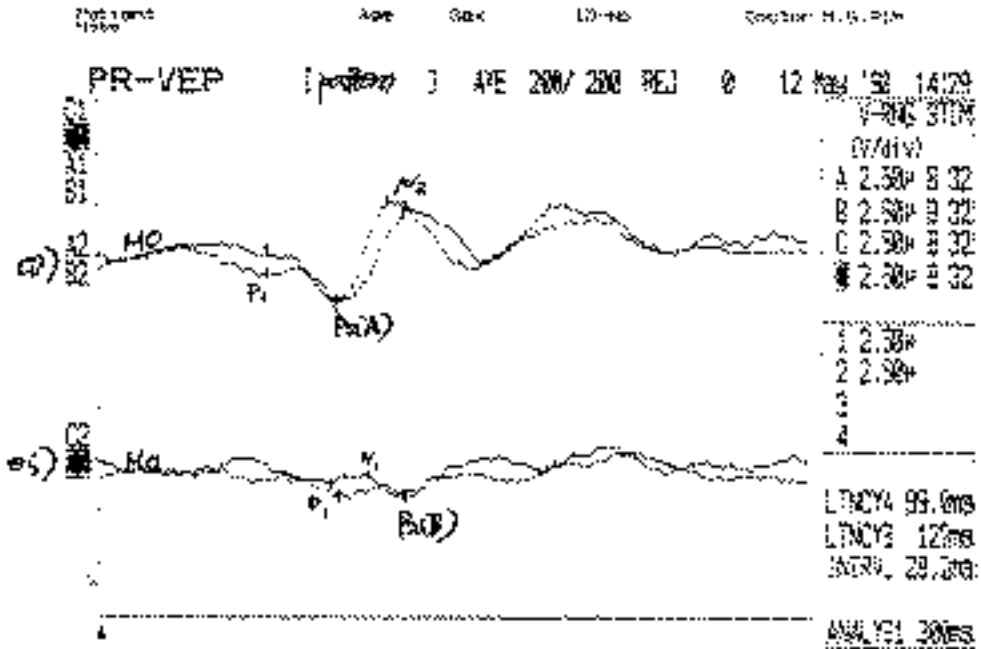


Fig. 3. Pattern VEP from the left eye shows a amplitude reduction and a delay in response.

가
가
가
Indocyanine green(ICG)

12-16)

17-18)

7-9

Gass

가 가

7,19)

가

16)

20-22)

가

23)

가

24)

REFERENCES

1) Jain IS, Singh K : Maculopathy; a corticosteroid side effect. J All India Ophthalmol Soc

14:250-2, 1966.
 2) Williamson J, Nuki G : Macular lesions during systemic therapy with depot tetracosactrin. Br J Ophthalmol 54:405-9, 1970.
 3) Wakakura M, Ishikawa S : Central serous chorioretinopathy complicating systemic corticosteroid treatment. Br J Ophthalmol 68:329-31, 1984.
 4) Gelber GS, Schatz H : Loss of vision due to central serous chorioretinopathy following psychological stress. Am J Psychiatry 144:46-50, 1987.
 5) Yannuzzi LA : Type-A behavior and central serous chorioretinopathy, Retina 7:111-130, 1987.
 6) Duke-Elder S : System of Ophthalmology. 10th ed, St. Louis, The C.V. Mosby Company, 1968, pp. 129-133.
 7) Gass JDM, Little H : Bilateral bullous exudative retinal detachment complicating idiopathic central serous chorioretinopathy during systemic corticosteroid therapy. Ophthalmology 102:737-747, 1995.
 8) Mazzuca DE, Benson WE : Central serous retinopathy: variants. Surv Ophthalmol 31:170-174, 1986.
 9) Wakakura M, Song E : Corticosteroid induced central serous chorioretinopathy. Jpn J Ophthalmol 41:180-185, 1997.
 10) Wakakura M, Ishikawa S : An evaluation of corticosteroid treatment for central serous chorioretinopathy. Rinsho Ganka 34:123-129, 1980.
 11) Bouzas EA, Scott MH, Mastorakos G, Chrousos GP, Kaiser-Kupfer MI : Central serous chorioretinopathy in endogenous hypercortisolism. Arch Ophthalmol 111:1229-1233, 1993.
 12) Bedrossian RH : Central serous retinopathy and pregnancy letter. Am J Ophthalmol 78:152, 1974.
 13) Cruysberg JR, Deutman AF : Visual disturbance during pregnancy caused by central serous choroidopathy. Br J Ophthalmol 66:240-241, 1982.
 14) Fastenberg DM, Ober RR : Central serous retinopathy and pregnancy. Arch Ophthalmol 101:1055-1058, 1983.

- 15) Gass JDM : Central serous chorioretinopathy and white subretinal exudation during pregnancy. *Arch Ophthalmol* 109:677-681, 1991.
- 16) Chumbley LC, Frank RN : Central serous retinopathy and pregnancy. *Am J Ophthalmol* 77:158-160, 1974.
- 17) Jabs DA, Hanneken AM, Schachat AP, Fine SL : Chorioretinopathy in systemic lupus erythematosus. *Arch Ophthalmol* 106:230-234, 1988.
- 18) Eckstein MB, Spalton DJ, Holder G : Visual loss from central serous retinopathy in systemic lupus erythematosus. *Br J Ophthalmol* 77:607-609, 1993.
- 19) Gass JDM. : Pathogenesis of disciform detachment of the neuroepithelium. : Idiopathic central serous retinopathy. *Am J Ophthalmol* 63:587-615, 1967.
- 20) Scheider A, Nasemann JE, Lund OE : Fluorescein and indocyanine green angiographies of central serous choroidopathy by scanning laser ophthalmoscopy. *Am J Ophthalmol* 115:50-56, 1993.
- 21) Piccolino FC, Borgia L : Central serous chorioretinopathy and indocyanine green angiography. *Retina* 14:231-242, 1994.
- 22) Guyer DR, Yannuzzi LA, Slakter JS : Digital indocyanine green videoangiography of central serous chorioretinopathy. *Arch Ophthalmol* 112:1057-1062, 1994.
- 23) Porth CM : Concepts of altered health states: In *Pathophysiology* 4th ed, Philadelphia, J.B. Lippincott, 1994, pp. 920-926.
- 24) Berne RM, Levy MN : *Physiology*, 3rd ed, St. Louis, Mosby Year Book, 1993, pp. 949-979.